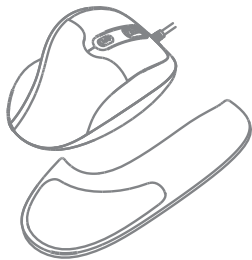


NEWTRAL 3 MOUSE

Programmable Ergonomic Mouse  
Model: N300BCM



QuickGuide English  
www.newtralmouse.com

1

FEATURES

- Interface:USB
- Button: 6 Buttons Programmable(Left & Right Click, Back & Forward, DPI Switch, Scroll Wheel and Middle Button)
- Hard Orientation: Right
- DPI Resolution: Optical Type 800/1200/2400/3200 by default(range of 400-3200 DPI resolution with software.)
- Dimensions: 113.81 x 79.63 x 52.59mm

REQUIREMENT

- Operating system: Windows 7/8/10  
Mac(Not Programmable for Mac System)
- Available USB port

DESCRIPTION



2

HARDWARE INSTALLATION

- Turn on your computer.



- Plug in the USB cable of your Newtral 3 Mouse into your computer's USB port.

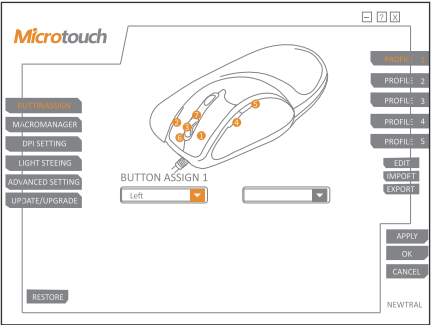


Wired USB Cable

3

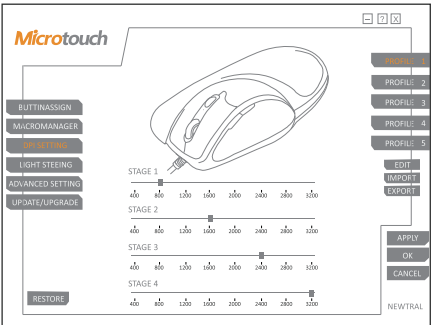
NEWTRAL 3 MOUSE SOFTWARE INSTRUCTION

- Download the software from web:<http://www.newtralmouse.com/download.htm>
- Once you have followed the installation steps, go into your "system tray" by clicking on the arrow located to the left of your Windows clock and click on the Newtral 3 Mouse icon(🖱️)
- Once you click on the Newtral 3 Mouse icon, it will bring up the menu as shown below. Click on "BUTTON ASSIGN" to change your mouse button and click "APPLY" to save the setting.
- Click on "MACRO MANAGER" to assign short commands to your mouse.



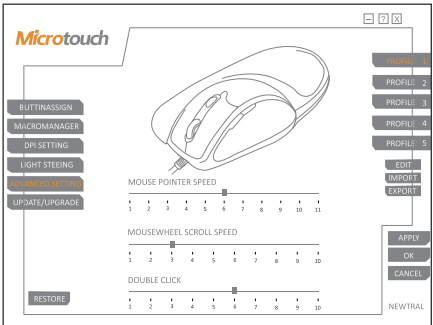
4

- Once you click on the newtral 3 mouse Icon, it will bring up the menu as shown below. Clickon "DPI SETTING" to change the speed of your mouse cursor as well as adjust DPI settings and click"APPLY"to save the setting.
- "LIGHT SETTING" is not working for this mouse.



5

- Once you click on the Newtral 3 Mouse Icon, it will bring up the menu as shown below. Click on"ADVANCED SETTING" to change mouse pointer speed\mousewheel scroll speed\double click and click"APPLY"to save the setting.
- Click on"UPDATE/UPGRADE":  
UPDATE: Line to Newtral Website  
SUPPORT: Link to Newtral website



6