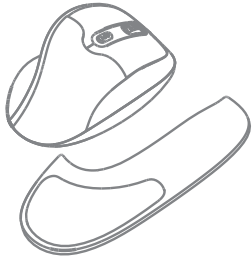


# NEWTRAL 3 MOUSE

Programmable Ergonomic Mouse  
Model: N300BWM



**QuickGuide** English  
www.newtralmouse.com

1

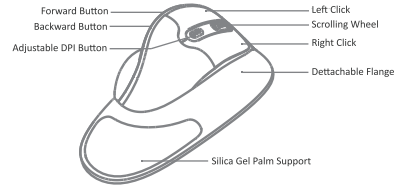
## FEATURES

- Interface:USB
- Button: 6 Buttons Programmable(Left & Right Click, Back & Forward, DPI Switch, Scroll Wheel and Middle Button)
- Hard Orientation: Right
- DPI Resolution: Optical Type 800/1600/2400
- Dimensions: 113.81 x 79.63 x 52.59mm
- Note: Battery: 1 X AA(Not Included)

## REQUIREMENT

- Operating system: Windows 7/8/10  
Mac(Not Programmable for Mac System)
- Available USB port

## DESCRIPTION



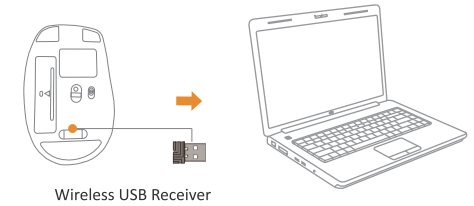
2

## HARDWARE INSTALLATION

- Turn on your computer.

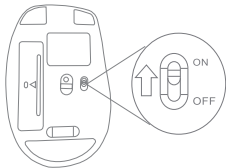


- Remove the back battery cover of Newtral 3 Mouse and pull out and insert the wireless receiver onto your computer's USB. Your operating system will automatically detect and assign a driver.



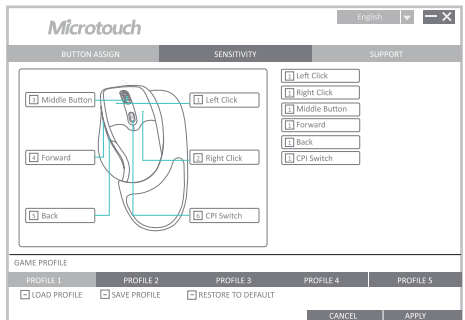
3

- Turn on your mouse with the ON/OFF switch and it will automatically pair with the inserted USB receiver.



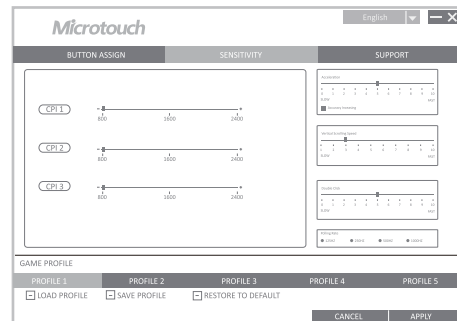
## NEWTRAL 3 MOUSE SOFTWARE INSTRUCTION

- Download the software from web:<http://www.newtralmouse.com/download.htm>



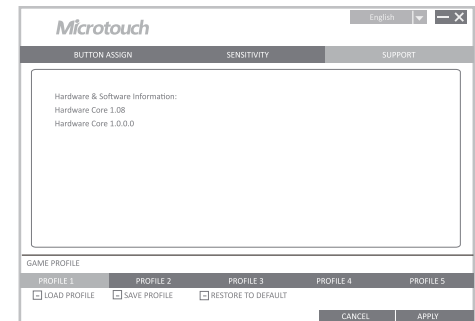
4

- Once you have followed the installation steps, go into your "system tray" by clicking on the arrow located to the left of your Windows clock and click on the Microtouch Newtral Mouse Wireless icon (🖱️)
- Once you click on the Icon, it will bring up the menu as shown below. You can set the language you want in the top right-hand corner of the menu. The configuration menu has three tabs: "Button assign", "Sensitivity" and "Support". The options available on the tabs are explained below.



5

- Click on "BUTTON ASSIGN" to change your mouse button and click "APPLY" to save the setting. By using the "Restore to default" button you can return all setting to factory default.
- Click on "SENSITIVITY" to change the speed of your mouse cursor as well as adjust DPI settings and click "APPLY" to save the setting. By using the "Restore to default" button you can return all setting to factory default.
- Click on "SUPPORT" you may find the hardware and software information.



6